



Focus 20W

FOCUS 20W 3000K 24° White Ø60mm

Cod: **MTK0113**



IP20
Protected from solid bodies larger than 12 mm



II
Protection class II



CRI >90
Colour rendering index >90



CAM compliant
CAM (Minimum Environmental Criteria) compliant product for indoor and outdoor installation



ReeR warranty
ReeR guarantees the product for a time duration of 3 years



Technical description

Product code: MTK0113 | Category: Indoor luminaires | Model: Focus 20W | Product description: FOCUS 20W 3000K 24° White Ø60mm | Source type: COB | Color temperature (CCT): 3000K | Color render index (CRI): > 90 | MacAdam (SDCM): < 4 | Lumen output (lm): 1700 | Beam angle: 24° | Photobiological risk: RG1 (low risk) | LED Lifetime: 50.000 h | Diameter (mm): 60 | Height (mm): 228 | Weight (g): 400 | IP rating: IP 20 | Finishing colour: White RAL9003 | Type of finishing: Polyester powder coated | Body material: Die-cast aluminum | Diffuser material: PMMA (polymethyl methacrylate) | Maximal working temperature: -25° C | Minimal working temperature: +55° C | Nominal power (W): 20 | Power factor: > 0.9 | Power supply: 220/240V 50/60Hz | Ballast: Integrated | Insulation class: II | Dimmable: No |

Lighting data

Source type	COB, COB
Color temperature (CCT)	3000K
Color render index (CRI)	> 90, > 90
MacAdam (SDCM)	< 4
Lumen output (lm)	1700

Beam angle	24°
Photobiological risk	RG1 (low risk), RG1 (low risk)
LED Lifetime	50.000 h

Mechanical data

Diameter (mm)	60
Height (mm)	228
Weight (g)	400
IP rating	IP 20
Finishing colour	White RAL9003, White RAL9003

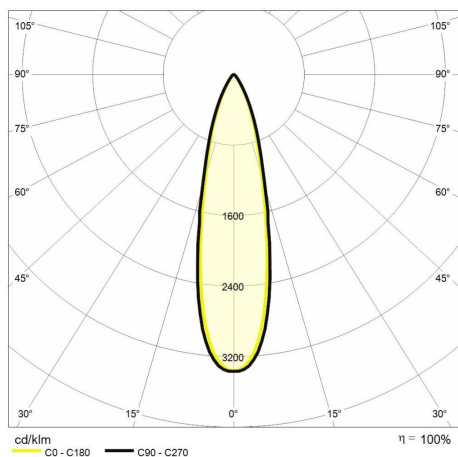
Type of finishing	Polyester powder coated, Polyester powder coated
Body material	Die-cast aluminum, Die-cast aluminum
Diffuser material	PMMA (polymethyl methacrylate)
Maximal working temperature	+55° C
Minimal working temperature	-25° C

Electrical data

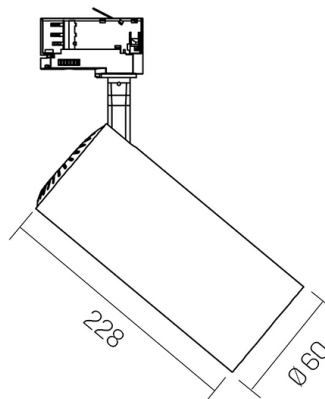
Nominal power (W)	20
Power factor	> 0.9
Power supply	220/240V 50/60Hz
Ballast	Integrated, Integrated
Insulation class	II

Dimmable	No
Quantity per package	1
Total quantity per boxing	20

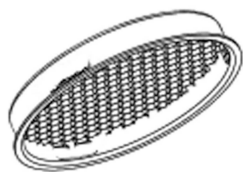
Photometry



Technical drawing



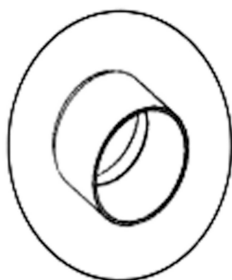
Accessories



Focus 20W accessories

HONEYCOMB FOCUS 20W Ø60mm
white

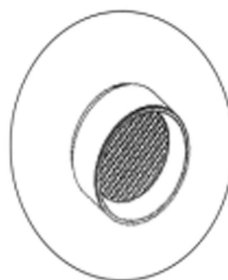
Cod: MTK0129



Focus 20W accessories

FOCUS JOINT 20W Ø60mm white

Cod: MTK0131



Focus 20W accessories

HONEYCOMB JOINT FOCUS 20W
Ø60mm white

Cod: MTK0133



Focus 20W accessories

OVAL JOINT FOCUS 20W Ø60mm white

Cod: MTK0135